

Practice Test
GATE C – Grades 8-9

Student Name _____

6. What is the Dominant 7th chord in the key of Gb Major?

- a. Db7 b. Gb7 c. Eb7 d. Cb7

7. Which inversion of the Dominant 7th chord has the 3rd in the bass?

- a. 1st inversion b. 2nd inversion c. 3rd inversion d. none of the above

8. What is the correct spelling of an Eb diminished triad?

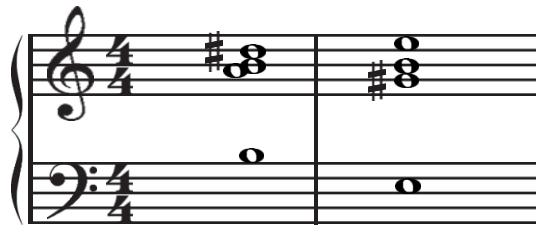
- a. Eb-Gb-Bb b. Eb-Gb-Bbb c. Eb-Gbb-Bbb d. Eb-Gbb-Bb

9. Which of the following is a **Half-Diminished 7th chord**?



- a. b. c. d.

10. This is a _____ cadence.



- a. Perfect Authentic b. Imperfect Authentic c. Plagal d. Half

11. Which of the following intervals is a tritone?

- a. Dim. 8th b. Aug. 5th c. Dim. 4th d. Aug. 4th

12. What is the *Mediant*?

- a. the middle of a measure b. a moderate tempo c. the 3rd note of a scale d. a fortune teller

Practice Test
GATE C – Grades 8-9

Student Name _____

13. What form of musical composition has a *Recapitulation*?

- a. Suite b. 3-part song form c. Sonata-Allegro d. Fugue

14. What is the meaning of *leggiero*?

- a. less motion b. gradually getting faster c. slowing d. lightly

15. What is the meaning of *assai*?

- a. enough b. in the same manner c. much slower d. with a lilt

16. Which time signature indicates compound triple time?

- a. $\frac{6}{4}$ b. $\frac{6}{8}$ c. $\frac{9}{8}$ d. $\frac{12}{8}$

17. What is the leading tone of the a# harmonic minor scale?

- a. A b. G^x c. G# d. G

18. What is the beat unit in $\frac{3}{2}$ time?

- a. eighth note b. quarter note c. dotted quarter note d. half note

19. Which interval is an Augmented 6th?

The image shows four musical staves, each with a treble clef and a whole note interval. Staff a shows a C4 to E4 interval. Staff b shows a C4 to G#4 interval. Staff c shows a C4 to A4 interval. Staff d shows a C4 to B4 interval.

a. b. c. d.

20. Which note is the *submediant* of c harmonic minor?

- a. Bb b. Ab c. B d. A

21. What is the *supertonic* triad in the key of B Major?

- a. C# Maj. b. c# min. c. c# dim. d. C# Aug.

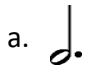
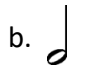

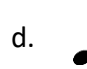
22. What is the third of a Gb Major triad?

- a. Bb b. Bbb c. Db d. D

Practice Test
GATE C – Grades 8-9

Student Name _____

23. Which note(s) correctly completes the measure?

a.  b.  c.  d. 

24. Which of the following statements is **not true** about a *fugue*?

- a. It is polyphonic in texture
- b. The 'answer' imitates the motive in a different key
- c. The motive is only heard at the beginning of the piece
- d. Each voice is equally important

25. What type of music is specific to a certain country usually handed down through oral tradition?

- a. Art Song
- b. Opera
- c. Anthem
- d. Folk Song

26. A *whole tone scale* different from every other scale because it:

- a. always begins on C
- b. uses only whole steps
- c. uses only black keys
- d. always begins on F#

27. What is the relative minor key of B Major?

- a. g# minor
- b. g minor
- c. d# minor
- d. b minor

28. What is the name of the interval if you inverted a Major 3rd?

- a. Major 6th
- b. minor 6th
- c. Aug. 6th
- d. dim. 6th

29. What type of *non-chord tone* is in the first measure?

- a. anticipation
- b. upper neighbor
- c. lower neighbor
- d. passing tone

Practice Test
GATE C – Grades 8-9

Student Name _____

30. Transpose the following melody up a Perfect 4th.

31. On the staff below, draw the order of sharps using standard accidental placement.

32. On the staff below, draw the order of flats using standard accidental placement.

33. Write a **half cadence** in the key of f minor. Use a key signature and label each chord with its Roman Numeral.

34. Write an A Major scale using whole notes, ascending only, **beginning on the leading tone**. Use accidentals.

35. Write the primary chords in E Major. Draw the key signature.

Practice Test
GATE C – Grades 8-9

Student Name _____

36-40. Write the letter next to the name that identifies each ornament on the correct line. (1 pt. each)

A. Mordent



B. Grace Note



C. Trill



D. Turn

